

Signature RESIN FLOORS



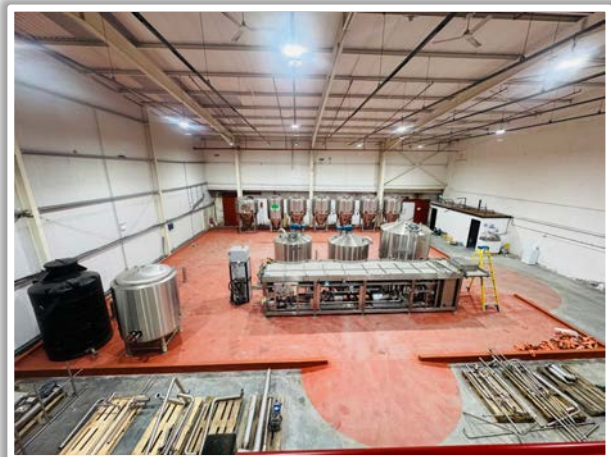
Amity Brew, Yorkshire

450m²

Sherwin Williams, FasTop RS 69

This was an exciting project to be a part of. From the outset, we collaborated closely with the brewery to fully understand their specific requirements. After identifying the precise locations for the two new drains they wanted installed, we determined the optimal method for creating the necessary falls. Once the drain positions were finalised, we excavated the areas and installed custom stainless steel drains before backfilling.

Next, we constructed bund walls and applied a polymer screed with falls on either side of the drains to ensure efficient water runoff. After the screed fully cured, we applied a 9mm polyurethane screed, incorporating day joints with radius coving along the inside of the bund and a smooth wall render on the exterior. This approach resulted in a clean, seamless finish that met both functional and aesthetic standards.



Signature
RESIN FLOORS

Signature RESIN FLOORS LTD Unit 6 Victoria Park Industrial Estate, Halifax, HX1 5ND
Tel 0800 0356180 Email info@signatureresinfloors.co.uk
Web www.signatureresinfloors.co.uk