

# Signature

## RESIN FLOORS



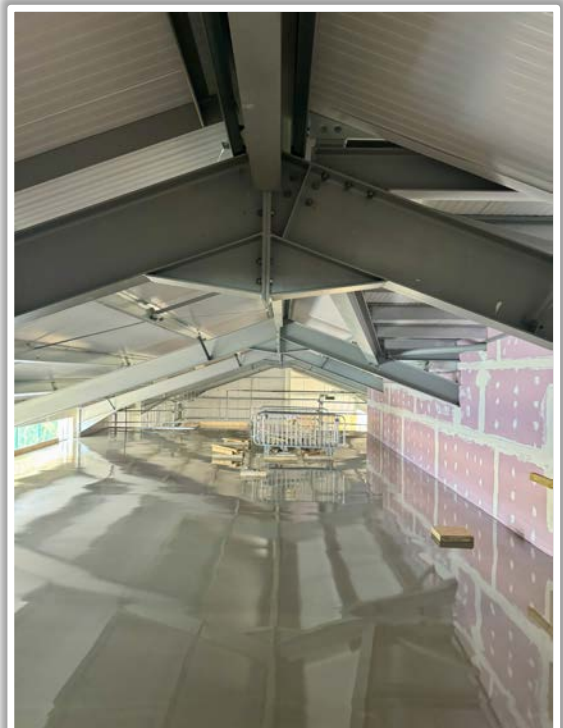
### Scotsdale Garden Centre, Cambridge

220 m<sup>2</sup>

### Self Levelling Screed 10mm

A new mezzanine was constructed to house valuable equipment requiring a level surface. However, the concrete base had been poorly finished, mirroring the undulations of the underlying corrugated metal sheeting.

To address this, we carried out extensive mechanical preparation to remove the high spots. We then applied a primer coat and a 10mm self-levelling screed, effectively correcting the uneven surface and creating a smooth, level platform suitable for equipment installation.



Signature  
RESIN FLOORS

Signature RESIN FLOORS LTD Unit 6 Victoria Park Industrial Estate, Halifax, HX1 5ND  
Tel 0800 0356180 Email [info@signatureresinfloors.co.uk](mailto:info@signatureresinfloors.co.uk)  
Web [www.signatureresinfloors.co.uk](http://www.signatureresinfloors.co.uk)